

PLANETARY GEARBOXES

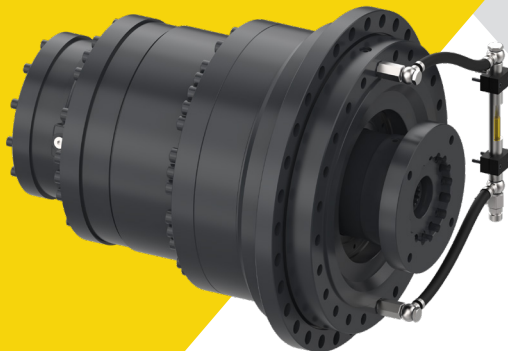
Dinamic Oil produces one of the largest and complete ranges of planetary gearboxes in the industry, up to an impressive 2.2 million ft-lbs of nominal gearbox torque. Whether your application is mobile, industrial, hydraulic, or electric, we have a solution to meet your requirements.

NOT A GEARBOX. A WORKHORSE.

Our extensive range of planetary gearboxes extends from 750 ft-lbs to 2.2 million ft-lbs of nominal gearbox torque with gearbox ratios ranging from 3.5 to 22,000 : 1.

The RE and GB series of planetary gearboxes have axial, radial, and torque ratings that surpass current industry standards and come complete with an extensive offering of output/input configurations and accessories.

Our planetary gearboxes can be supplied with the following outputs; flange mounts, foot supports, or shaft mounted with shrink discs. The output shafts can be male or female, cylindrical, splined, square, or hexagon, and our integral pinion output shafts have made us leaders in the small slew and yaw drive markets.





RE



The RE Series of planetary gearboxes are compact and highly efficient at 98% efficiency per reduction stage. The RE series has a wide array of input and output accessories. The torque ranges of the RE Series extend from 740 ft-lbs of nominal gearbox torque to 59,200 ft-lbs. RE gearboxes are suited to a broad range of applications covering the high overload characteristics found in the mobile industry to the longevity and reliability requirements of the industrial sector.

MAX OUTPUT TORQUE - 59,200 FT-Lbs (80,000 Nm)

EH



The EH Track Drives are designed for torques ranging from 100,000 to 900,000 Nm, equivalent to machine weights of 20 to 400 Tons. The EH Series of Planetary Track Drives have planet carriers made of high strength steel, and case hardened gears that allow for optimum shock resistance. Our design consists of planet carriers composed of 3, 4, or 5 planet gears that provide a wide variation of gearbox ratio combinations. The Track Drives come with integral negative static multi-disc brakes and variable or fixed motor inputs.

MAX OUTPUT TORQUE - 332,100 FT-Lbs (450,000 Nm)

WD



The planetary winch drives are rotating case gearboxes especially designed for hoist applications. The WD series are DNV and ABS type approved for FEM L2 T5 M5 torque values of 4,000 to 380,000 ft-lbs. The modular design offers all the flexibility of our standard industrial range of gearboxes, ratio compositions, and input configurations (bevel, electric, hydraulic, brakes, sprag clutches). The Winch Drive series is highly customizable and can be supplied with or without hydraulic motor and valves assemblies.

MAX OUTPUT TORQUE - 383,764 FT-Lbs (520,000 Nm)

GB



The GB Series is our most extensive range of high torque planetary gearboxes. GB Series offers a sizable torque range and an impressive 98% efficiency per reduction stage. The GB Series is available with a wide array of input and output accessories with nominal torque ranges that extend from 88,560 ft-lbs to an impressive 2.2 million ft-lbs.

MAX OUTPUT TORQUE - 2,215,000 FT-Lbs (3,000,000 Nm)

Custom Gearboxes

The modular design of our planetary gearboxes and our flexible thinking allows for easy customization. We have successfully designed and implemented countless customized solutions. Whether your gearbox needs to fit into an existing space, consists of a unique configuration, or simply requires a particular paint color, we are ready to assist. Contact us to learn more.

For more than 50 years Dinamic Oil has been developing innovative gear products that stand apart from the competition to meet the needs of our diverse customers.

Dinamic Oil North America is the US-based subsidiary of Dinamic Oil S.p.A.