



Spare parts catalogue

Winch
A44

DINAMIC OIL S.p.A.

Via Togliatti, 15
41030 Bomporto (MO)
tel +39.059.812611
fax +39.059.812603
dinamicoil@dinamicoil.it

Spare parts catalogue No.

L163

Logbook code

920510370E

Edition

23/09/2013

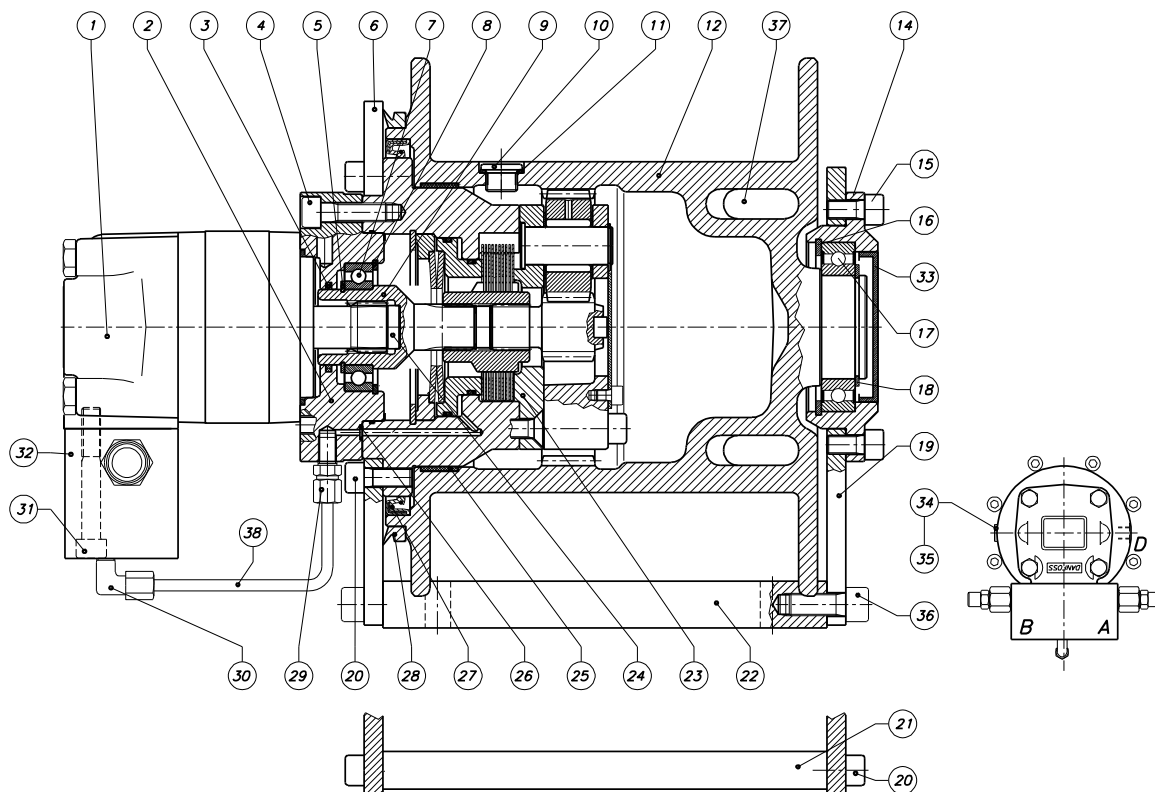
Revision

0

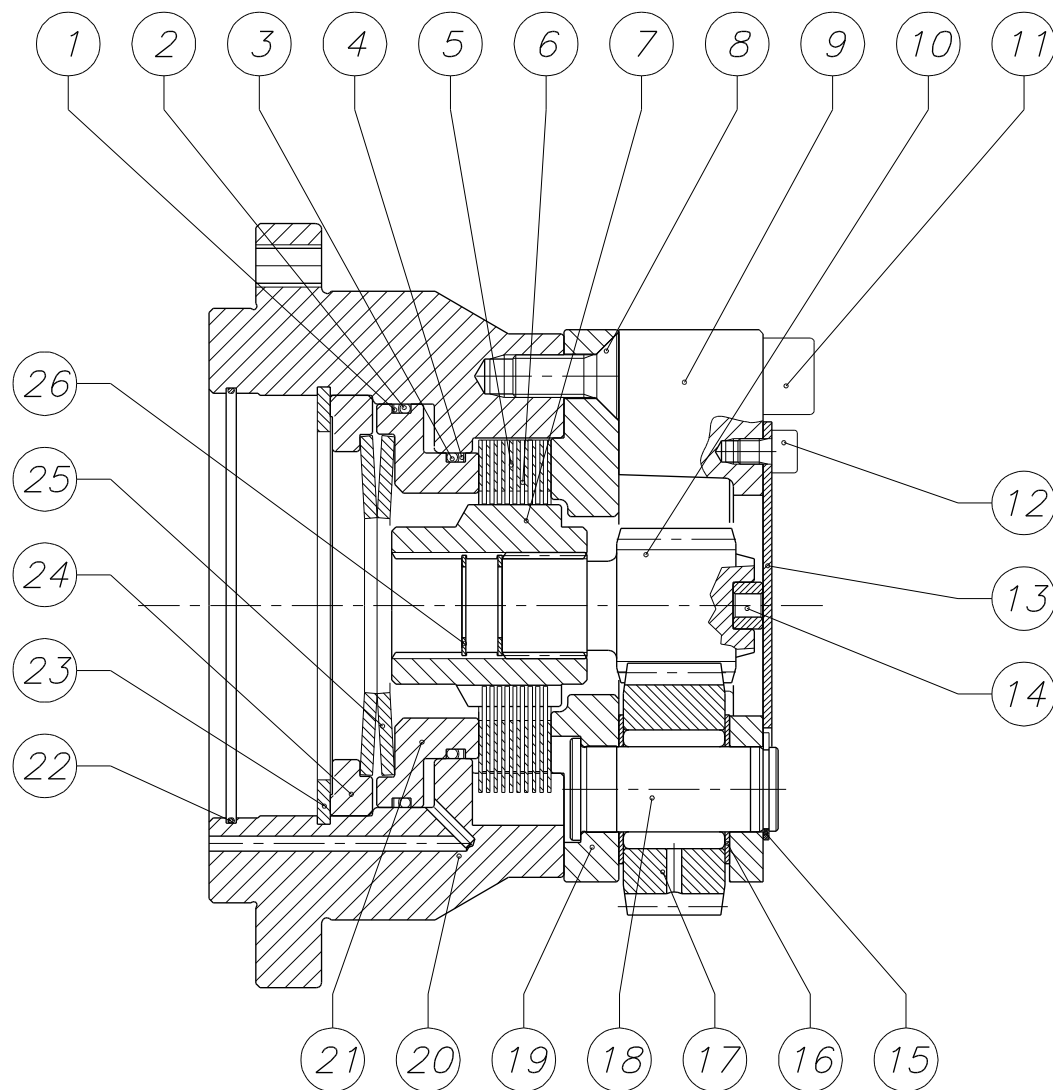


Table index	<i>Winch</i>	A44
	<i>Logbook code</i>	920510370E

Page	Table code	Table heading
3	920510370E	WINCH A44 DX L.F10
4	029810118	BRAKE GROUP NP18 (WITH REDUCTION)



Pos	Code	Qty	Description
1	425026600	1	MOTOR OMSU 200 3S.151F0582
2	025110129	1	MOTOR FLANGE WINCH A30-44
3	415061900	1	SEAL ROTO-GLYD RING S 56131-0400-
4	410001600	4	HEX SOCKET HEAD CAP SCREW M10X35 8.8 UNI 5931
5	421000600	1	SEEGER FOR SHAFT Ø40
6	023410256	1	MOTOR SIDE SUPPORT A41
7	400023000	1	BALL BEARING 6008 TYPE B
8	421101200	1	HOLE SEEGER Ø68
9	026310115	1	MOTOR COUPLING WINCH A30-44
10	419000700	2	HEX SOCKET HEAD CAP PLUG 3/8" GAS DIN 908
11	423000600	2	3/8" COPPER WASHER UNI 6953
12	023010123	1	CAST IRON DRUM A44
14	023510105	1	BEARING SUPPORT RING A41
15	410022600	6	HEX SOCKET HEAD CAP SCREW M10X20 12.9 UNI5931
16	421101700	1	HOLE SEEGER Ø90
17	400020600	1	BALL BEARING 6011 2RS (ZKL)
18	421000900	1	SHAFT SEEGER Ø55
19	023410257	1	ROPE SIDE SUPPORT A44
20	410407000	12	HEX SOCKET HEAD CAP SCREW M10X25 12.9 UNI 5931
21	024510156	2	CROSS MEMBER A41
22	024510155	2	FIXING PLATE A41
23	029810118	1	BRAKE GROUP NP18 (WITH REDUCTION)
24	02741054	1	SHIMMING PAD S19/2
25	294201900	1	GUIDE RING ATS-F 148X153X19.5 RFG
26	406001100	1	O-RING 2-008
27	415012800	1	OIL SEAL 180X200X13 BASL
28	406060900	1	V-RING NBR VA 199
29	440001000	1	STRAIGHT CONNECTOR 1/8"G CONICAL Ø6 PIPE
30	440000100	1	CONNECTOR 90° 1/8"BSP TAPERED Ø6 PIPE
31	410001900	2	HEX SOCKET HEAD CAP SCREW M10X60 8.8 UNI 5931
32	438041600	1	VALVE OWC DBL 7/8"-14UNF
33	415068800	1	CLOSING CAP RCA 80X10
34	419000600	1	HEX SOCKET HEAD CAP PLUG 1/4" GAS DIN 908
35	423000300	1	SOFT COPPER WASHER 1/4" 13X19X1.5
36	410402100	8	HEX SOCKET HEAD CAP SCREW M12X30 12.9 UNI 5931
37	02410222	1	THIMBLE FOR ROPE Ø6 WINCH P9



Pos	Code	Qty	Description
1	406016600	1	O-RING 2-153 N 674-70 (PARKER)
2	415066900	1	ANTIEXTRUSION PARBAK 8-153
3	406016500	1	O-RING 2-146 N 741-75 (PARKER)
4	415066800	1	ANTIEXTRUSION RING PARBAK 8-146
5	02941061	9	INTERNAL STEEL DISK P6-P9-P15
6	029410105	10	BRONZE DISK
7	02241020	1	INPUT SHAFT
8	410101200	3	HEX SOCKET COUNTERSUNK HEAD CAP SCREW M10X25 10.9
9	222101100	1	PLANETARY CARRIER A44
10	261111200	1	SOLAR SHAFT NP18-A44
11	410405300	6	HEX SOCKET HEAD CAP SCREW M12X60 12.9 UNI 5931
12	410015900	3	HEX SOCKET HEAD CAP SCREW TCEI M6X8 8.8 UNI 5931
13	240100700	1	CONTAINMENT PLATE NP10-NP18
14	2030101700	1	SUN GEAR PAD NP18
15	421000100	3	SHAFT SEEGER Ø20
16	402002700	6	FIFTH WHEEL AS 20X35X0,8
17	02981910	3	NEEDED PLANETARY GEAR GROUP RE210 1:5,77
18	02581038	3	PLANETARY CARRIER PIN RE200 YEAR VERS.2003
19	237129500	1	PLANETARY CARRIER A44
20	233102500	1	FLANGE NP18-A44
21	243125200	1	BRAKE BODY A44
22	406000800	1	O-RING 2-045
23	421101900	1	HOLE SEEGER Ø100
24	273132400	1	SPRING CAP NP18
25	416201200	2	CUP SPRING 80X41X3 DIN2093
26	421103200	2	CLIP RING DIA 22MM