



Spare parts catalogue

Winch

A30

DINAMIC OIL S.p.A.

Via Togliatti, 15
41030 Bomporto (MO)
tel +39.059.812611
fax +39.059.812603
dinamicoil@dinamicoil.it

Spare parts catalogue No.

L91

Logbook code

931220130D

Edition

30/03/2013

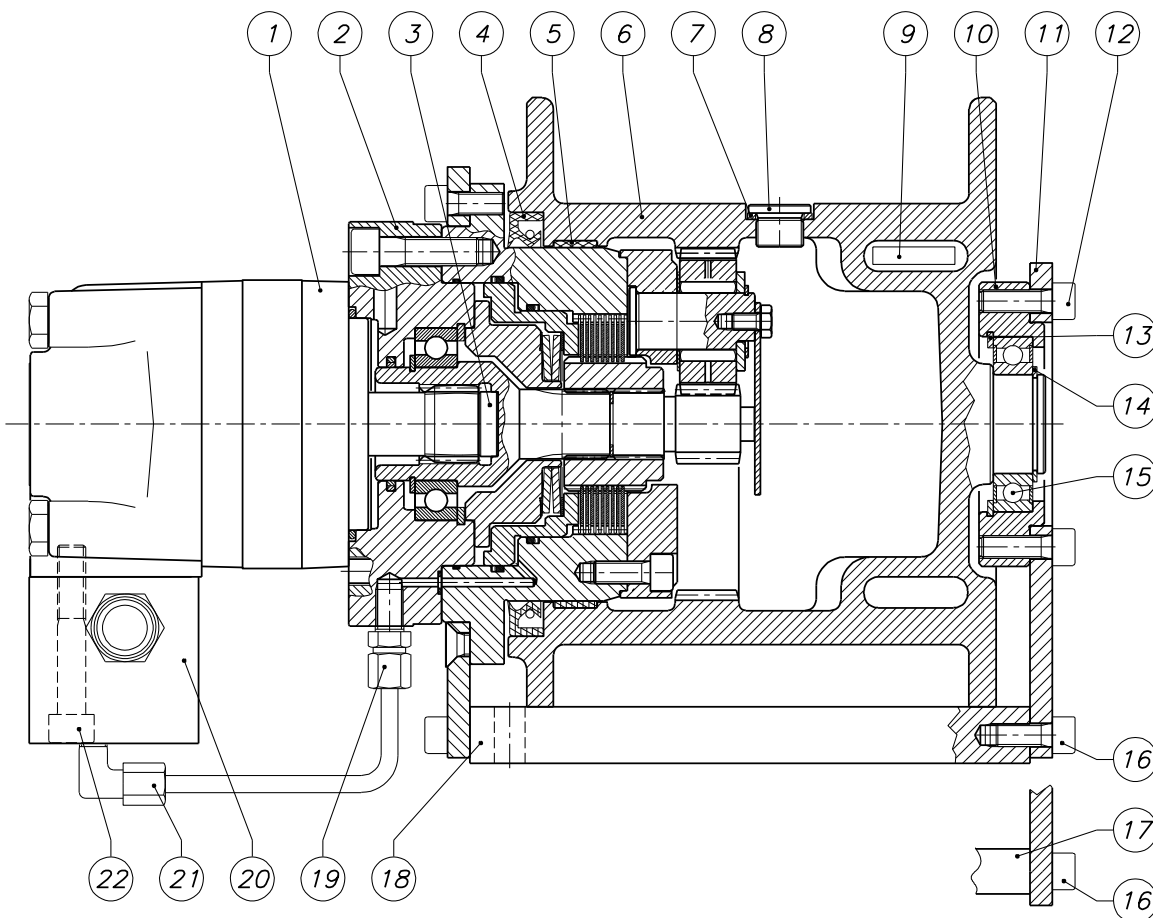
Revision

0

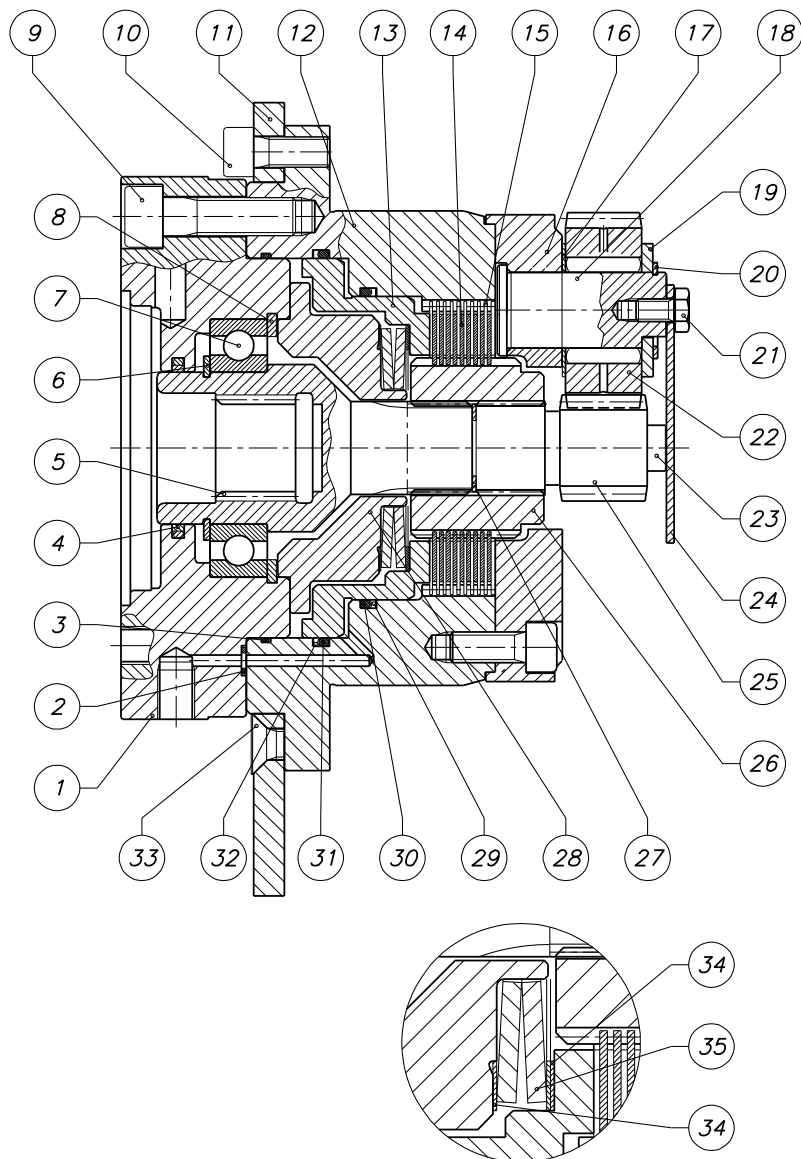


Table index	<i>Winch</i>	A30
	<i>Logbook code</i>	931220130D

Page	Table code	Table heading
3	931220130D	WINCH A30 CW/CCW L.F8 OMSU 125
4	029810205	BRAKE GROUP A30 (+ GEARBOX)



Pos	Code	Qty	Description
1	425024400	1	MOTOR OMSU 125 3S.151F0580
2	029810205	1	BRAKE GROUP A30 (+ GEARBOX)
3	02741054	1	SHIMMING PAD S19/2
4	415011300	1	SEAL RING 125X150X12 BASL
5	294201800	1	GUIDE RING 81T25150-1250-92-A
6	02301026	1	DRUM WINCH NP10
7	423000600	1	SOFT WASHER COPPER 3/8" UNI 6953
8	419000700	1	HEX SOCKET HEAD CAP PLUG DIN 908 R 3/8"GAS
9	241000100	1	THIMBLE BH180-NP10-NP12 Ø8 P9E-P9
10	023510107	1	SUPPORT RING WINCH A30
11	234001300	1	SUPPORT SIDE ROPE CONNECTION NP10
12	410403000	4	SCREW TCEI M8X25 12.9 UNI 5931
13	421101000	1	HOLE SEEGER Ø62
14	421000500	1	SHAFT SEEGER Ø35
15	400003800	1	BALL BEARING 6007 2RS TIPO B
16	410402900	12	SCREW TCEI M8X20 12.9
17	024510171	2	FIXING PLATE WINCH A11-18-24-30
18	024510170	2	FIXING PLATE WINCH A11-18-24-30
19	440001000	1	STRAIGHT CONNECTOR 1/8"G CONICAL Ø6 PIPE
20	438041600	1	VALVE LUEN OWC DOPPIA 7/8"-14UNF S10
21	440000100	1	CONNECTOR 90° 1/8"G CONICAL Ø6 PIPE
22	410001900	2	SCREW TCEI M10X60 8.8



Pos	Code	Qty	Description
1	025110129	1	MOTOR FLANGE WINCH A30-44
2	406001100	1	O-RING 2-008
3	406000800	1	O-RING 2-045
4	415061900	1	SEAL ROTO-GLYD RING S 56131-0400-
5	026310115	1	MOTOR COUPLING WINCH A30-44
6	421000600	1	SHAFT SEEGER Ø40
7	400023000	1	BALL BEARING 6008 TIPO B
8	421101200	1	HOLE SEEGER Ø68
9	410401400	4	SCREW TCEI M10X35 12.9 UNI 5931
10	410402900	15	SCREW TCEI M8X20 12.9
11	234001400	1	MOTOR SIDE SUPPORT NP10
12	233102400	1	CARRIER FLANGE WINCH NP10
13	02271003	1	BRAKE PISTON FD
14	294182100	9	BRONZE DISK FD (1 MM)
15	294181900	10	STEEL DISK FD (0,8 MM)
16	237115100	1	PLANETARY CARRIER NP10
17	402002700	3	SHIM AS 20X35X0,8
18	260101200	3	PLANETARY CARRIER SHAFT NP10
19	402004000	3	SHIM ADJUSTMENT CPS 1506
20	421000100	3	SHAFT SEEGER Ø20
21	410211000	3	SCREW TE M6X10 8.8
22	02981902	3	PLANETARY GEAR GROUP NP10
23	2030101700	1	SUN GEAR PAD NP18
24	240100700	1	CONTAINMENT PLATE NP10-NP18
25	261101200	1	SOLAR GEAR NP10-NP12
26	2020120400	1	HOLDER BLADE BUSHING FD
27	421103200	1	HOLE SEEGER Ø22
28	027310149	1	SPRING CAP ARG A30
29	406012000	1	O-RING 2-152 N 741-75
30	415068900	1	ANTIEXTRUSION FLUORTEN T-2683
31	406015900	1	O-RING 2-155 N 741-75 (PARKER)
32	415069000	1	ANTIEXTRUSION FLUORTEN T-2684
33	410040400	2	SCREW TSPEI M8X20 10.9
34	427014300	3	THICKNESS SHIM ADJUSTMENT 52X65X0,5 DIN988
35	416202600	2	CUP SPRING 63X31X2,5